



STUDENT APARTMENT **AUCKLAND**

Empire Apartments

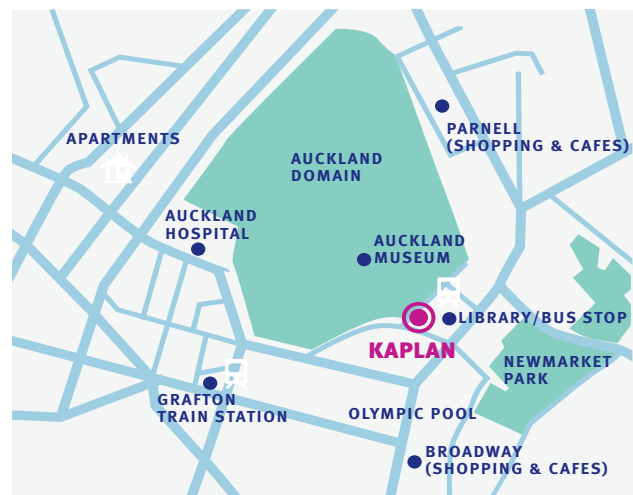


Empire is a centrally located budget student apartment option providing basic but modern fully furnished accommodation in Auckland city centre. Empire Apartment facilities include a kitchenette with microwave/fridge and utensils, extra services available include a weekly cleaning package and linen change.

Amenities include a café, gymnasium, coin operated laundry, video monitored security and 24/7 reception providing students with a safe, secure and comfortable living environment. Empire is a good choice for students, located within 10 minutes of Queen Street, Cinemas and Town Hall, and only about 30 minutes walk or 15 minutes bus to Kaplan International College Auckland.



Empire Apartments



Empire Apartments
21 Whitaker Place
Auckland
New Zealand

**STUDENT APARTMENT EMPIRE APARTMENTS****AUCKLAND**

Single room (3-bedroom shared apartment)



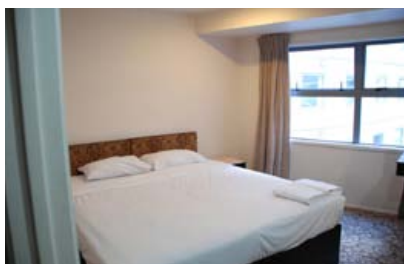
Kitchenette (3-bedroom shared apartment)



Bathroom



Twin room (studio apartment)



Double room (studio apartment)



Cafe

Accommodation details

Type of accommodation

Empire are self-catering apartments offering a choice of a twin or double room (in a studio apartment) or a room in a 3-bedroom shared apartment. Each apartment has a kitchenette, living area and bathroom.

Meals and kitchen

Self-catering. Each apartment has a fully-equipped kitchenette with a microwave and fridge for students to prepare their own meals. Empire also has an on site cafe where students can purchase simple and fresh food.

Rooms

Each room consists of a bed, desk, chair and wardrobe.

Bathrooms

Each apartment has its own shared bathroom.

Utilities

Electricity and water are included in the accommodation fee. Electrical current is 240 volts AC. Students from some countries may require a transformer and a plug adaptor.

Internet and phone

A telephone and internet connection is available at an additional fee. Details are available from reception at Empire.

Laundry and cleaning

Coin-operated washing machines and dryers are available for use. Apartments are cleaned and bed linen is changed once a week (included in the accommodation fee). There is a departure cleaning fee of NZD 60.

Bed linen and towels

Bed linen is included, but students will need to bring their own towels or can purchase a towel, face cloth and bath mat package for NZD 20 from reception.

Noise and restrictions

Students are requested to be considerate to their neighbours and keep noise levels to a minimum especially after 10pm.

Visitors

No unaccompanied visitors are allowed into the apartments. Visitors are to leave by 10pm.

Additional facilities

On-site gymnasium and cinema/function room.

Deposit

A security deposit of NZD 300 will be charged upon arrival. Any damages to the apartment will be charged directly to the student. Loss of apartment key will result in a charge of NZD 150.

Security

Empire has a security access card lock system and CCTV Cameras to ensure student safety. Smoke detectors and fire sprinklers are also installed to prevent fire hazards.

Arrivals and departure

Check-in time: 2:00pm
Check-out time: 11:00am

Availability

Empire apartments are available year round. Please check with a Kaplan representative at the time of enrolment.

Different room types are available and the pictures are examples only. Information is subject to change. Published November 2011.